

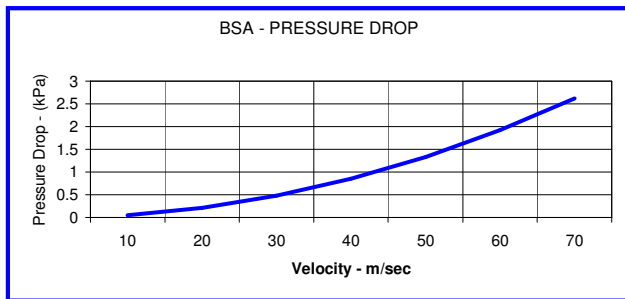
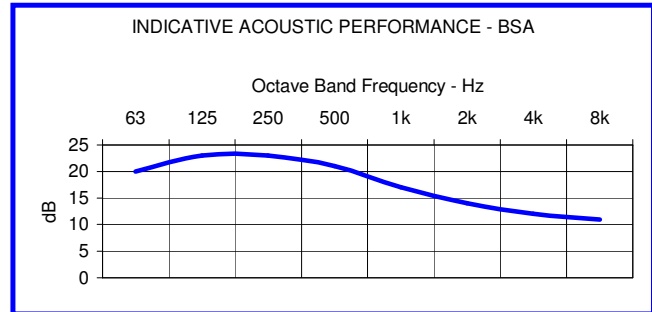
**BSA SERIES**  
**INDUSTRIAL**  
**BARWEST SPARK**  
**ARRESTOR MUFFLERS**

**DESCRIPTION:**

BSA series units are multi-chamber reactive units with good broad band performance. The main characteristic of this range is their low pressure drop figures, whilst suppressing dangerous particles that may cause ignition in gaseous or flammable environments

**DESCRIPTION:**

BSA spark arrestor mufflers are suitable for use on the exhausts of all internal combustion engines. They ensure that all emissions are arrested to ensure that no ignition source is generated



**Note:** Pressure Drop Graph is based on an exhaust temperature of 450° C

**CONNECTIONS:**

Standard connections on all Barclay mufflers are Australian Standard Table "D" pattern flanges. Other flange patterns available. Gaskets, Bolt Kits and Companion flanges can be supplied with all mufflers as required.

**MOUNTING BRACKETS:**

Fixed or sliding mounting brackets available as optional extras

**NOTE:**  
**ALL CALCULATIONS OR FIGURES SHOWN ARE ESTIMATED AND OR CALCULATED ON STANDARD ENGINE DATA AVAILABLE**

**CONSTRUCTION:**

All Barclay mufflers are manufactured from high quality 250Mpa steel plate and fabricated using welding techniques to AS1554 1986. BSA nits are made to heavy duty specifications in accordance with our ISO 9000 quality accreditation, to ensure the product meets with the most demanding installations.

Models are also available in Stainless Steel.

**FINISH:**

Standard finish on all mufflers is a High Temperature Black Enamel applied over a grit blasted surface.

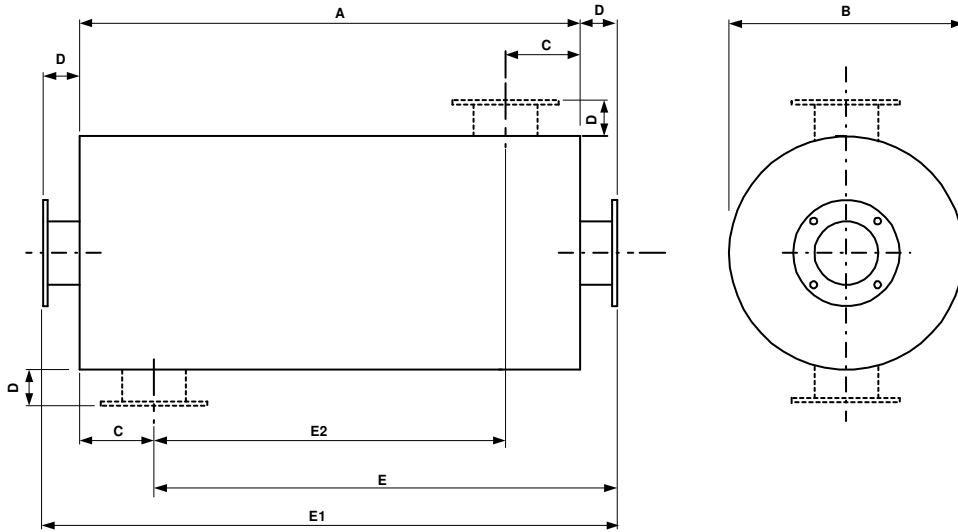
Alternative coatings are available such as Hot Aluminised Metal Spray, recommended for the most severe environments.

All Stainless Steel manufactured units are natural finish as manufactured

**ACCESSORIES AND OPTIONS:**

Barclay Engineering can provide a total exhaust solution for your noise problems. We can provide all associated components such as flexible exhaust bellows, piping, lagging and a complete design, fabrication and installation service. Call our sales department to discuss your needs.

**BSA SERIES**  
**INDUSTRIAL**  
**BARWEST SPARK**  
**ARRESTOR MUFFLERS**



**DIMENSIONS AND WEIGHT**

SIZE	A	B	C	D	E	E1	E2	WGT-kg
BSA50	600	286	-					
BSA80	600	286	-					
BSA100	900	380	-					
BSA125	900	425	-					
BSA150	1200	475	-					
BSA200	1500	475	-					
BSA250	1800	570	-					
BSA300	2100	760	-					
BSA350	2400	760	-					

**Larger Sizes Available on Request**

- Weights shown in table above are (Nominal) and for muffler only and do not include weights for mounting brackets etc
- All units can be slung from body or inlet/outlet necks. Lifting lugs can be provided as optional extra
- Unless specified otherwise, inlet and outlet flanges will be table "D" pattern
- Configuration data is as follows  
**EE** = End Entry, **SE** = Side Entry, **EO** = End Outlet, **SO** = Side Outlet, **BOT** = Bottom of Muffler, **TOP** = Top of Muffler, **LHS** or **RHS** = Sides of Muffler. (IN RELATION TO THE ABOVE DIAGRAM)  
**Note!** All Positions, **BOT, TOP, LHS, RHS** are taken from inlet end of muffler. (LEFT HAND SIDE OF ABOVE DIAGRAM)

**EXAMPLE:**

You have selected a muffler to suit your 3 requirements such as, **Attenuation, Gas Flow and Backpressure**. We will assume a BIS200 size unit fits your requirement, with a bottom side entry, end outlet.

Your order specification would read as follows.  
finished in high temperature black enamel

**BIS200-SE/BOT-EO**

Unless otherwise specified, all mufflers will be

**Ph: (618) 9456 0300**

**Fax (618) 9456 0388**

**Email: info@barclayeng.com.au**