

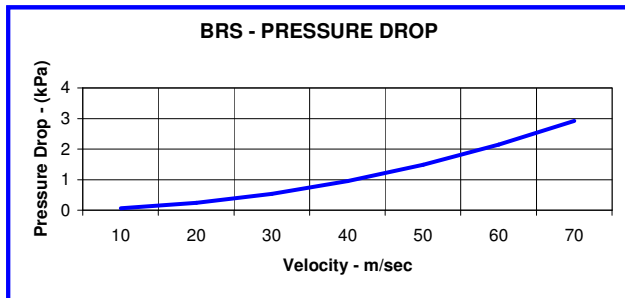
BRS SERIES RESIDENTIAL BARWEST MUFFLERS

DESCRIPTION:

BRS series mufflers are multi chamber reactive units, for use where better than average acoustic performance is required for residential or industrial situations. This range is designed for maximum all round performance.

DESCRIPTION:

These mufflers can be utilised on all types of **Reciprocating Engines, Inlet and Outlets of Blowers, Vacuum Pumps, Compressors and Gas Handling Systems.**



Note: Pressure Drop Graph is based on an exhaust temperature of 450° C

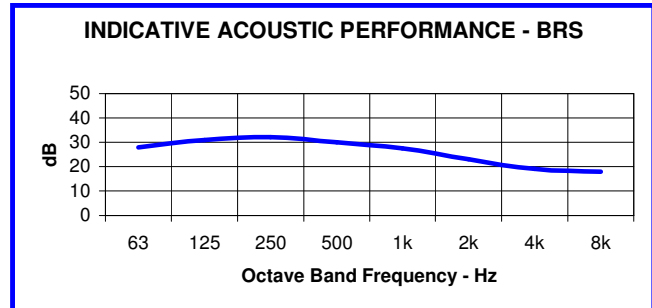
CONNECTIONS:

Standard connections on all Barclay mufflers are Australian Standard Table "D" pattern flanges. Other flange patterns available. Gaskets, Bolt Kits and Companion flanges can be supplied with all mufflers as required.

MOUNTING BRACKETS:

Fixed or sliding mounting brackets available as optional extras

NOTE:
ALL CALCULATIONS OR FIGURES SHOWN ARE ESTIMATED AND OR CALCULATED ON STANDARD ENGINE DATA AVAILABLE



CONSTRUCTION:

All Barclay mufflers are manufactured from high quality 250Mpa steel plate and fabricated using welding techniques to AS1554. BRS units are made to heavy duty specifications in accordance with our ISO 9000 quality accreditation, to ensure the product meets with the most demanding installations.

Models are also available in Stainless Steel.

FINISH:

Standard finish on all mufflers is a High Temperature Black Enamel applied over a grit blasted surface.

Alternative coatings are available such as Hot Aluminised Metal Spray, recommended for the most severe environments.

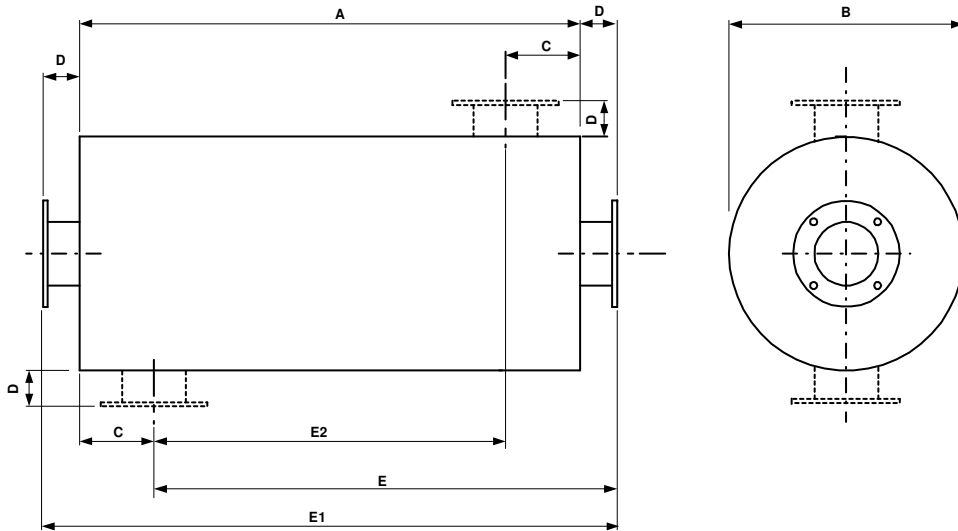
All Stainless Steel manufactured units are natural finish as manufactured

ACCESSORIES AND OPTIONS:

Barclay Engineering can provide a total exhaust solution for your noise problems. We can provide all associated components such as flexible exhaust bellows, piping, lagging and a complete design, fabrication and installation service. Call our sales department to discuss your needs.

12-16 Catalano Road Canning Vale WA 6106
PO Box 1653 Canning Vale WA 6970

Ph: (618) 9456 0300
Fax: (618) 9458 0388
Email: info@barclayeng.com.au



DIMENSIONS AND WEIGHT

SIZE	A	B	C	D	E	E1	E2	WGT-kg
BRS50	750	203	75	75	750	900	600	14
BRS65	850	254	100	75	825	1000	650	19
BRS80	1000	300	125	75	950	1150	750	34
BRS100	1200	400	150	75	1125	1350	900	57
BRS125	1350	500	175	100	1275	1550	1000	82
BRS150	1500	550	175	100	1425	1700	1150	102
BRS200	1800	650	200	100	1700	2000	1400	160
BRS250	2400	750	225	100	2275	2600	1950	239
BRS300	2700	950	250	125	2575	2950	2200	357
BRS350	3000	1050	275	125	2850	3250	2450	658
BRS400	3400	1200	345	125	3180	3650	2710	884
BRS450	3600	1350	370	125	3355	3850	2860	1090
BRS500	4200	1500	395	125	3930	4450	3410	1382

Larger Sizes Available on Request

- Weights shown in table above are (Nominal) and are for muffler only and do not include weights for mounting brackets etc
- All units can be slung from body or inlet/outlet necks. Lifting lugs can be provided as optional extra
- Unless specified otherwise, inlet and outlet flanges will be table "D" pattern
- Configuration data is as follows
EE = End Entry, **SE** = Side Entry, **EO** = End Outlet, **SO** = Side Outlet, **BOT** = Bottom of Muffler, **TOP** = Top of Muffler, **LHS** or **RHS** = Sides of Muffler. (IN RELATION TO THE ABOVE DIAGRAM)
Note! All Positions, **BOT**, **TOP**, **LHS**, **RHS** are taken from inlet end of muffler. (LEFT HAND SIDE OF ABOVE DIAGRAM)

EXAMPLE:

You have selected a muffler to suit your 3 requirements such as, **Attenuation, Gas Flow and Backpressure**. We will assume a BRS200 size unit fits your requirement, with a bottom side entry, end outlet and fixed mounting feet.

Your order specification would read as follows.

BRS200-SE/BOT-EO