

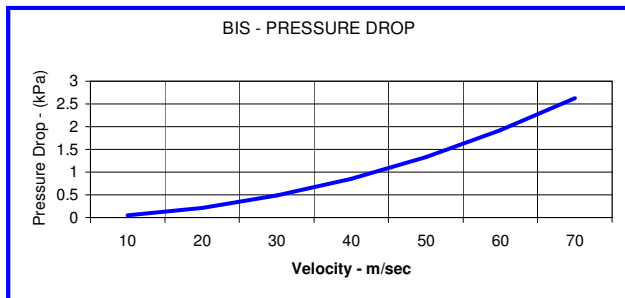
BIS SERIES INDUSTRIAL BARWEST MUFFLERS

DESCRIPTION:

BIS series units are multi-chamber reactive units with good broad band performance. The main characteristic of this range is their low pressure drop figures, whilst still achieving an acceptable acoustic result.

DESCRIPTION:

BIS mufflers are suitable for use on the exhausts of diesel engines and the control of plant noise. With good low frequency performance, these units can be used in most industrial situations.



Note: Pressure Drop Graph is based on an exhaust temperature of 450° C

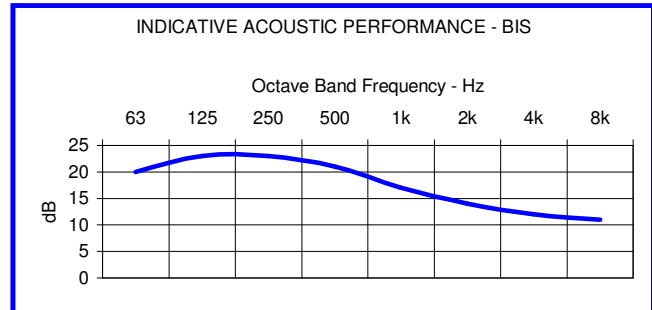
CONNECTIONS:

Standard connections on all Barclay mufflers are Australian Standard Table "D" pattern flanges. Other flange patterns available. Gaskets, Bolt Kits and Companion flanges can be supplied with all mufflers as required.

MOUNTING BRACKETS:

Fixed or sliding mounting brackets available as optional extras

NOTE:
ALL CALCULATIONS OR FIGURES SHOWN ARE ESTIMATED AND OR CALCULATED ON STANDARD ENGINE DATA AVAILABLE



CONSTRUCTION:

All Barclay mufflers are manufactured from high quality 250Mpa steel plate and fabricated using welding techniques to AS1554. BIS units are made to heavy duty specifications in accordance with our ISO 9000 quality accreditation, to ensure the product meets with the most demanding installations.

Models are also available in Stainless Steel.

FINISH:

Standard finish on all mufflers is a High Temperature Black Enamel applied over a grit blasted surface.

Alternative coatings are available such as Hot Aluminised Metal Spray, recommended for the most severe environments.

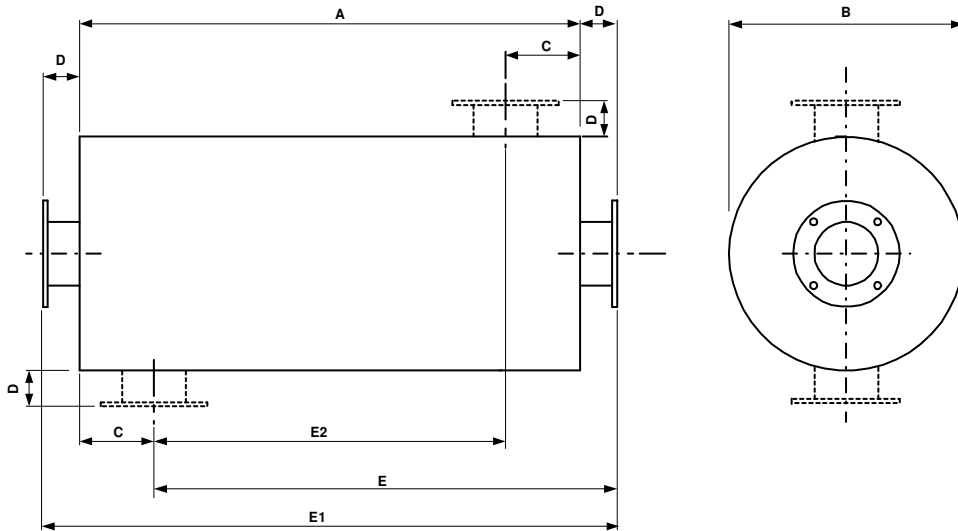
All Stainless Steel manufactured units are natural finish as manufactured

ACCESSORIES AND OPTIONS:

Barclay Engineering can provide a total exhaust solution for your noise problems. We can provide all associated components such as flexible exhaust bellows, piping, lagging and a complete design, fabrication and installation service. Call our sales department to discuss your needs.

12-16 Catalano Road Canning Vale WA 6106
PO Box 1653 Canning Vale WA 6970

Ph: (618) 9456 0300
Fax: (618) 9458 0388
Email: info@barclayeng.com.au



DIMENSIONS AND WEIGHT

SIZE	A	B	C	D	E	E1	E2	WGT-kg
BIS50	550	152	75	75	550	700	400	9
BIS65	700	203	100	75	675	850	500	14
BIS80	800	225	125	75	750	950	550	23
BIS100	1200	300	150	75	1125	1350	900	41
BIS125	1300	375	175	75	1200	1450	950	58
BIS150	1325	450	175	100	1250	1525	975	85
BIS200	1350	600	200	100	1250	1550	950	123
BIS250	1450	750	225	100	1325	1650	1000	176
BIS300	1700	760	250	125	1575	1950	1200	205
BIS350	1800	900	275	125	1650	2050	1250	274
BIS400	2000	954	300	125	1825	2250	1400	324
BIS450	2200	1125	330	125	1995	2450	1540	601
BIS500	2500	1250	360	125	2265	2750	1780	760

Larger Sizes Available on Request

- Weights shown in table above are (Nominal) and for muffler only and do not include weights for mounting brackets etc
- All units can be slung from body or inlet/outlet necks. Lifting lugs can be provided as optional extra
- Unless specified otherwise, inlet and outlet flanges will be table "D" pattern
- Configuration data is as follows
EE = End Entry, **SE** = Side Entry, **EO** = End Outlet, **SO** = Side Outlet, **BOT** = Bottom of Muffler, **TOP** = Top of Muffler, **LHS** or **RHS** = Sides of Muffler. (IN RELATION TO THE ABOVE DIAGRAM)
Note! All Positions, **BOT**, **TOP**, **LHS**, **RHS** are taken from inlet end of muffler. (LEFT HAND SIDE OF ABOVE DIAGRAM)

EXAMPLE:

You have selected a muffler to suit your 3 requirements such as, **Attenuation, Gas Flow and Backpressure**. We will assume a BIS200 size unit fits your requirement, with a bottom side entry, end outlet.

Your order specification would read as follows.
 finished in high temperature black enamel

BIS200-SE/BOT-EO

Unless otherwise specified, all mufflers will be

Ph: (618) 9456 0300

Fax (618) 9456 0388

Email: info@barclayeng.com.au